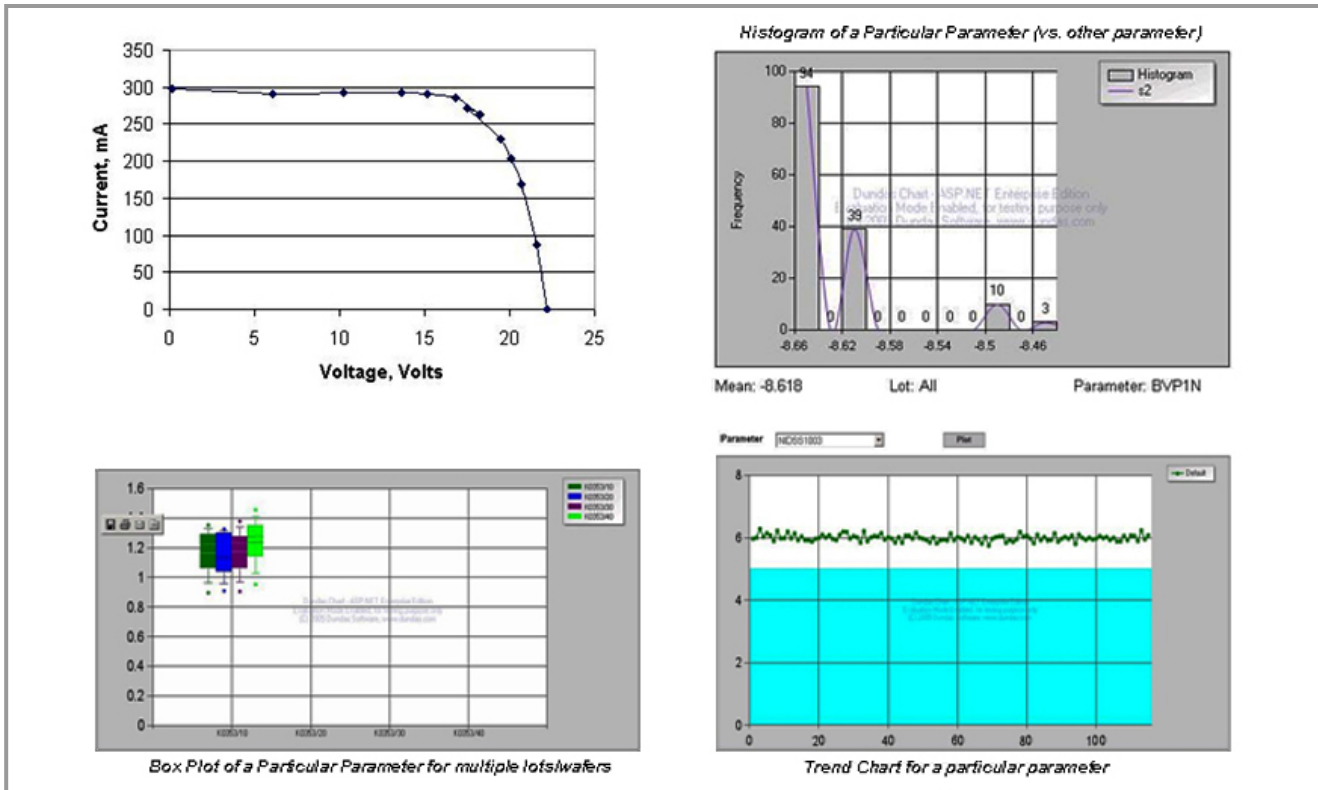


YieldManager® Solar



YieldManager Solar exports raw data and generates customized drill-down charts for accurate analysis.

Comprehensive Analysis and Traceability

- YieldManager Solar maintains and provides real-time accessibility to the complete history of all manufactured lots, substrates and cells from multiple production sites.
- Automatic detection and control of parametric data collection combined with a structured data and failure analysis tool make it possible to solve problems and ramp up yield quickly.

In-depth Work Flow Management

- Executive dashboard visualization of key manufacturing and quality performance indicators, root cause analysis of issues and controlled execution of all stages of manufacturing process facilitates continuous product and process improvements.

Enhance Shop Floor Work in Process Management

- Multi-level work in process (WIP) tracking provides visibility and control of the changes occurring with the equipment or manufacturing cells and their impact on the overall system and yield. Movements can be controlled by time limits, holds and results achieved.

TECHNOLOGY FEATURES:

YieldManager Solar Features

- **Industry Standard File Format Support** – Including MODBUS over Rs232/.csv files.
- **Support Module** – WIP, inline, wafer acceptance test (WAT), process control monitoring (PCM), cell sort and final test.
- **Cell Mapping** – Bin, parametric, composite, gallery, zonal (circular, radial, quadrants, stepper shot, by column/row), pattern recognition.
- **Correlation** – Creates correlation coefficient matrix between inline process data, WAT, cell sort and final test.
- **Limit File Management** – Allows setup limit file for parameters such as spec, valid, control and engineering.
- **Process Control** – Generates trend chart, histogram, Pareto, box plot, and scatter plot.
- **Statistical Summaries** – Generates statistical summaries such as mean, standard deviation, min, max, median, Cp/Cpk/Ca, etc.
- **Data Explorer** – Provides web-based spreadsheet module to analyze any data.
- **Raw Data Report** – Exports any raw data to spreadsheet-compatible formats.
- **Open Architecture** – Supports SOAP/XML/ASP/Visual Basic/Microsoft .NET for web services.

System Requirements

- **Hardware** – Standard Desktop Edition 1 GB RAM
- **Software** – Windows XP/Windows 2003/Windows Vista IIS 6.0 or higher



1650 Technology Drive, San Jose, CA 95110 USA | Tel: 408-565-7500 | Fax: 408-565-7501 | www.magma-da.com